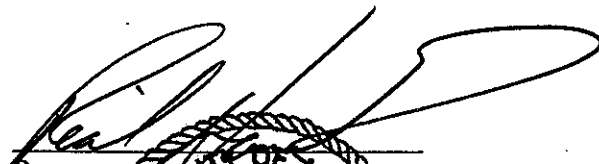
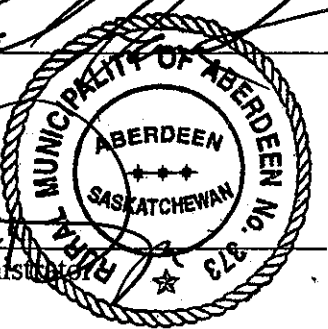


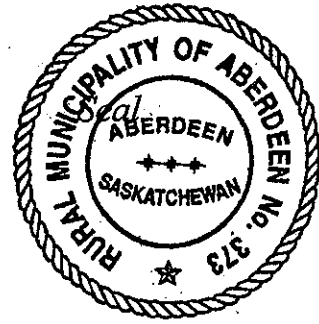
**RURAL MUNICIPALITY OF ABERDEEN NO. 373  
BYLAW 2009 - 03**

**A Bylaw of the Rural Municipality of Aberdeen No. 373 to Amend Bylaw 2007-05  
known as the Zoning Bylaw**

The Council of the Rural Municipality of Aberdeen No. 373 in the Province of Saskatchewan enacts as follows:

- 1) The Zoning District Map referred to in PART IV – ZONING DISTRICTS is amended by rezoning the NW ¼ Part of Section 30, Township 37, Range 3, West of the 3<sup>rd</sup> Meridian (Blk/Par B Plan No. 101651598 Extension 0) from A: Agriculture District to CR2: Medium Density Country Residential District as per the attached parcel drawing which is part of this bylaw.
- 2) This bylaw shall come into force on the date of approval by the Minister of Government Relations.

  
 Reeve  
  
 Administrator



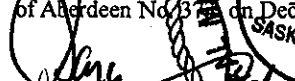
Read the first time this 8<sup>th</sup> day of June, 2009.

Read the second time this 22<sup>nd</sup> day of December, 2009.


Read the third time this 22<sup>nd</sup> day of December, 2009.

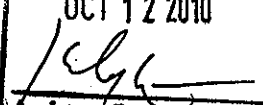
Adoption of this bylaw was on the 22<sup>nd</sup> day of December, 2009.

Certified a true copy of Bylaw No. 2009-03  
Passed by the Council of the Rural Municipality  
of Aberdeen No. 373 on December 22, 2009.

  
Gary Dziadyk, Administrator

Certified a true copy of Bylaw 2009-03  
Adopted by Resolution No. 286 of the Council  
of the Rural Municipality of Aberdeen No. 373  
on the 22<sup>nd</sup> day of December, 2009.

  
Gary Dziadyk (Administrator)

**APPROVED  
REGINA, SASK.**  
 OCT 12 2010  
  
 Assistant Deputy Minister  
 Ministry of M... Affairs

# Bergheim Estates

PLAN  
SHOWING PROPOSED SUBDIVISION OF  
PARCEL B, PLAN NO. 101651598  
N.W. 1/4 SEC. 30 -  
TWP. 37 - RGE. 3 - W.3 MER.  
R.M. OF ABERDEEN NO. 373  
SASKATCHEWAN  
BY: R.A. WEBSTER, S.L.S.  
2007  
SCALE 1 : 5,000

Saskatchewan Land Surveyor  
May 4th, 2007

LEGEND  
Dimensions shown are in metres and decimals thereof.  
This plan proposed for subdivision is outlined with a  
heavy broken line, and contains 31.154 hectares (76.974 acres).

EXAMINED:

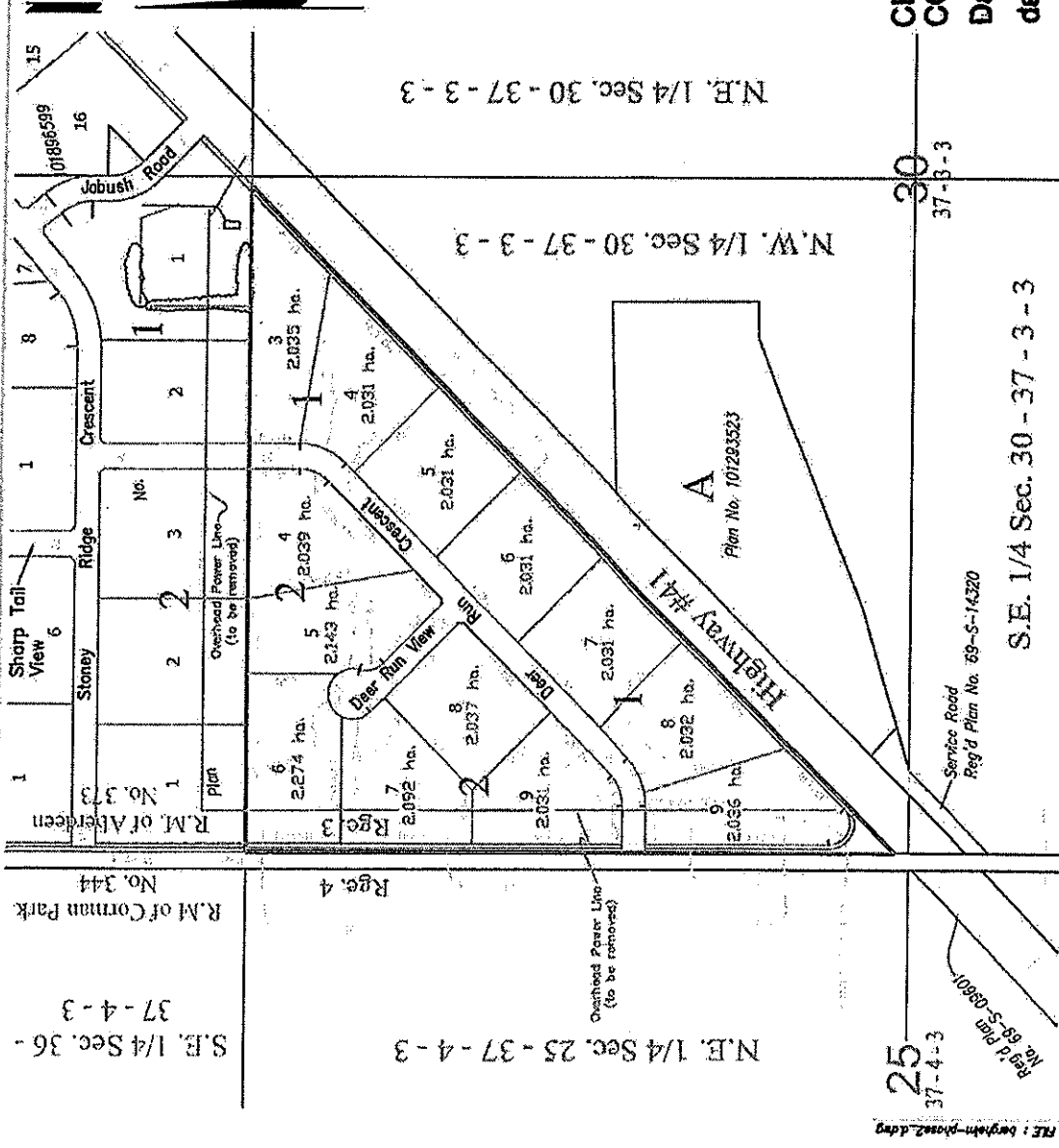
DEVELOPER: 101073369 Saskatchewan Ltd.

CERTIFIED A TRUE AND CORRECT  
COPY OF THE ORIGINAL DOCUMENT

Dated at Aberdeen, SK this 26<sup>th</sup>  
day of April, 2007

R.A. WEBSTER SURVEYOR LTD.  
Professional Surveyors  
Phone: (306) 463-1234  
Fax: (306) 463-1234

Gary Dziadyk, Administrator



RE: bergheim-Phase2.dwg  
37-4-3  
25  
Reg'd Plan No. 68-S-09601  
Service Road  
Reg'd Plan No. 69-S-14320  
30  
37-3-3  
S.E. 1/4 Sec. 30 - 37 - 3 - 3  
Plan No. 101293523  
A