

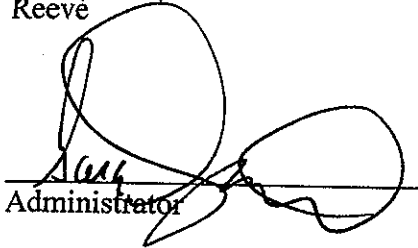
**RURAL MUNICIPALITY OF ABERDEEN NO. 373  
BYLAW 2007 - 07**

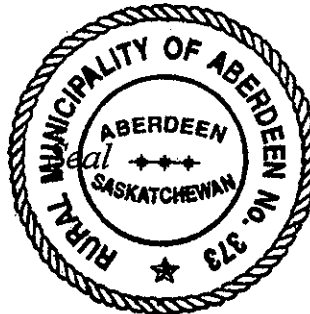
**A Bylaw of the Rural Municipality of Aberdeen No. 373 to Amend Bylaw 2007-05  
known as the Zoning Bylaw**

The Council of the Rural Municipality of Aberdeen No. 373 in the Province of Saskatchewan enacts as follows:

- 1) The Zoning District Map referred to in PART 5 – ZONING DISTRICTS is amended by rezoning the SE¼ of Section 9, Township 38, Range 3, West of the 3<sup>rd</sup> Meridian from A- Agriculture District to CR2 – Medium Density Country Residential District as per the attached proposed subdivision by Peters Surveys Ltd. dated September 14<sup>th</sup>, 2007, which is part of this bylaw.
- 2) This bylaw shall come into force on the date of approval by the Minister of Government Relations.

  
 \_\_\_\_\_  
 Reeve

  
 \_\_\_\_\_  
 Administrator



Read a first time this 26th day of November, 2007.

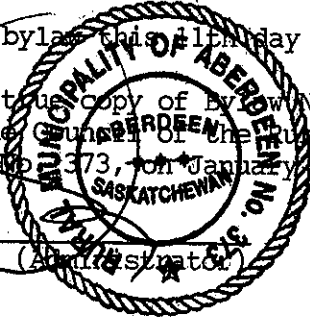
Read a second time this 11th day of January, 2008.

Read third time this 11th day of January, 2008.

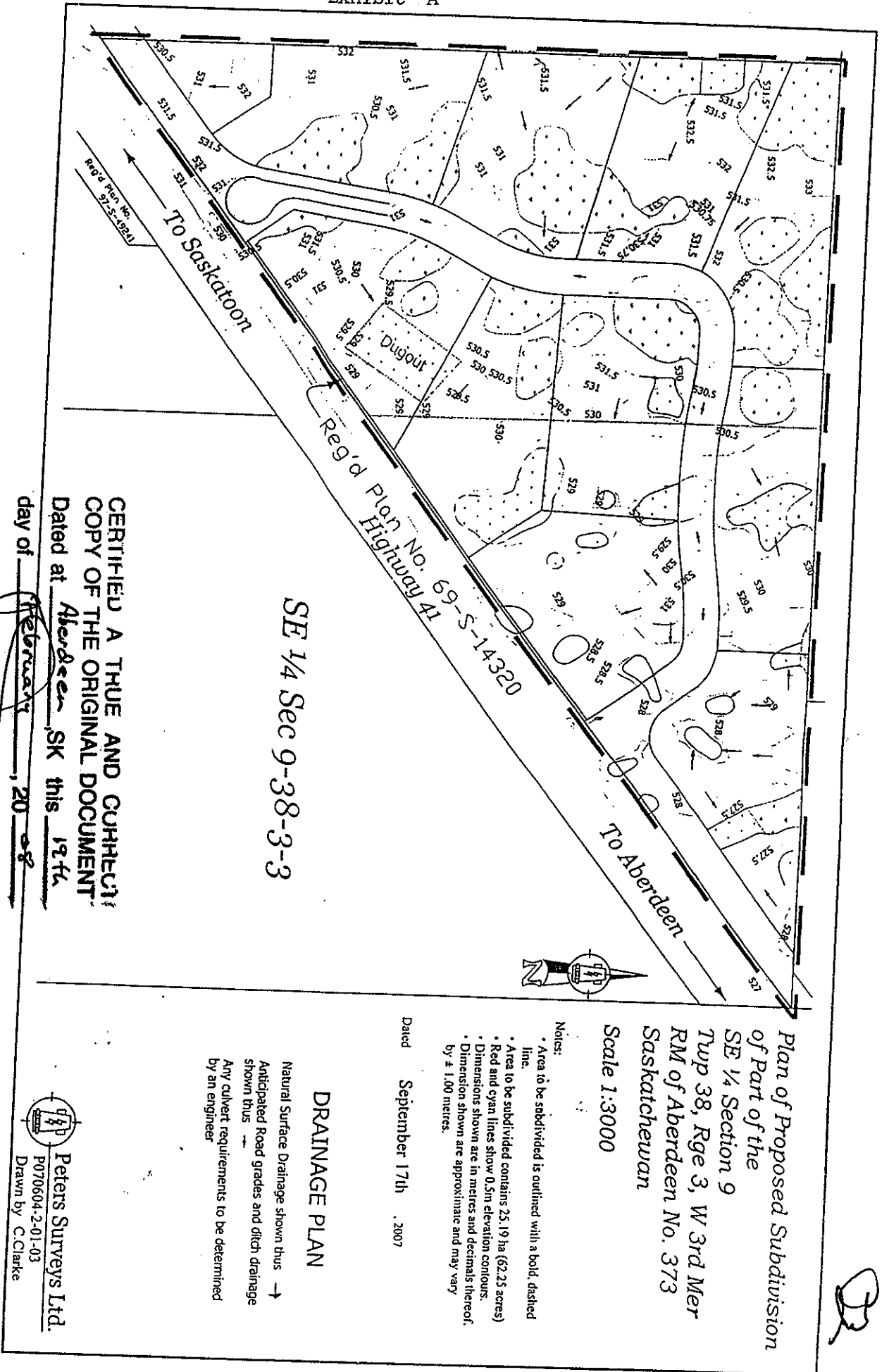
Adoption of bylaw this 11th day of January, 2008.

Certified a true copy of Bylaw No. 2007-07 passed by the Council of the Rural Municipality of Aberdeen No. 373, on January 11th, 2008.

  
 \_\_\_\_\_  
 Gary Dziadok (Administrator)



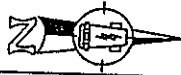
**APPROVED**  
**REGINA, SASK.**  
**MAR 18 2008**  
  
 \_\_\_\_\_  
 Assistant Deputy Minister  
 Ministry of Municipal Affairs



SE 1/4 Sec 9-38-3-3

CERTIFIED A TRUE AND CORRECT  
 COPY OF THE ORIGINAL DOCUMENT  
 Dated at Aberdeen, SK this 19<sup>th</sup>  
 day of September, 2008

Gary Dziadok, Administrator



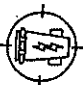
Plan of Proposed Subdivision  
 of Part of the  
 SE 1/4 Section 9  
 Twp 38, Rge 3, W 3rd Mer  
 RM of Aberdeen No. 373  
 Saskatchewan  
 Scale 1:3000

- Notes:
- Area to be subdivided is outlined with a bold, dashed line.
  - Area to be subdivided contains 25.19 ha (62.25 acres)
  - Red and cyan lines show 0.5m elevation contours.
  - Dimensions shown are in metres and decimals thereof.
  - Dimension shown are approximate and may vary by ± 1.00 metres.

Dated September 17th, 2007

**DRAINAGE PLAN**

Natural Surface Drainage shown thus →  
 Anticipated Road grades and ditch drainage shown thus —  
 Any culvert requirements to be determined by an engineer

  
 Peters Surveys Ltd.  
 P070604-2-01-03  
 Drawn by C. Clarke