

RURAL MUNICIPALITY OF ABERDEEN NO. 373

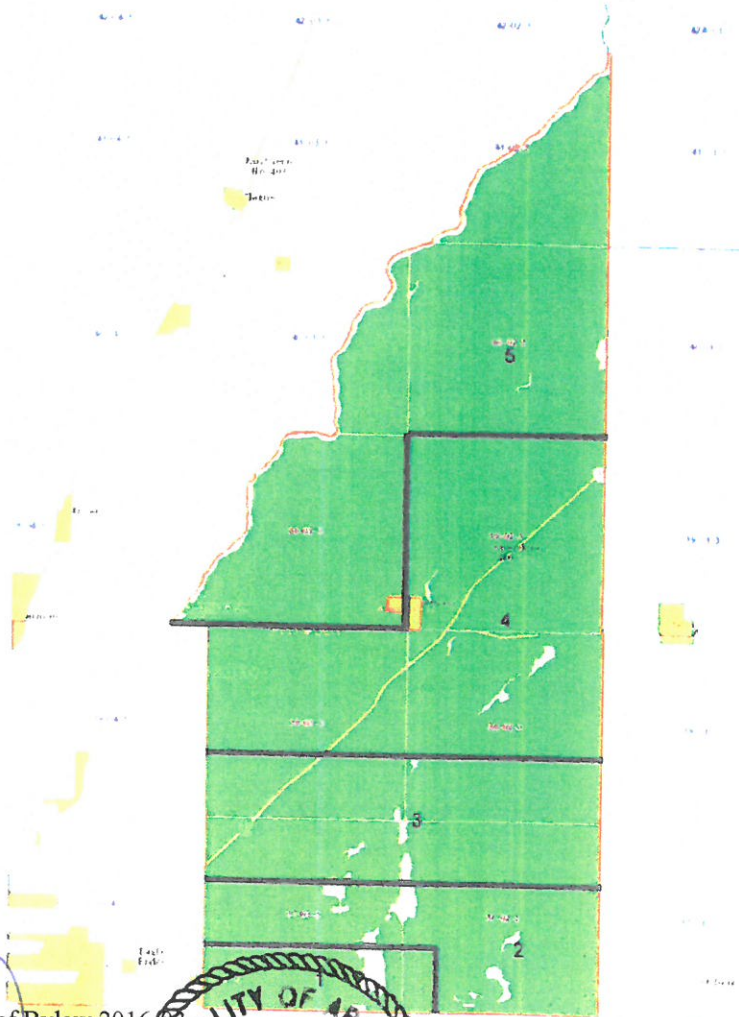
BYLAW NO. 2016-03

A BYLAW TO PROVIDE FOR A VOTE ON A QUESTION

The Council of the R.M. of Aberdeen No. 373 in the Province of Saskatchewan enacts as follows:

1. The following question shall be submitted to a vote:

“That the Council of the Rural Municipality of Aberdeen No. 373 request the Minister of Municipal Affairs of the Government of Saskatchewan to alter the divisional boundaries of the R.M. of Aberdeen No. 373 in accordance with the proposed divisional boundaries drawn on a map and the description of each new division as shown in the petition?”



Certified a true copy of Bylaw 2016-03
Adopted by the Council October 13, 2016.

Gary Dziadyk
Gary Dziadyk (Administrator)



M.B.

RM of Aberdeen No. 373 Division Boundary Change

Division 1:

Township 37 - In range 3, sections 1 to 12 inclusive. In range 2, all of sections 6 and 7.

Division 2:

Township 37 - In range 3 sections 13 to 24 inclusive. In range 2, all of sections 1, 2, 3, 4 and 5 and sections 8 to 24 inclusive.

Division 3:

Township 37 – In range 3 sections 25 to 36 inclusive. In range 2, section 25 to 36 inclusive.
Township 38 – In range 3 sections 1 to 12 inclusive, In range 2, sections 1 to 12 inclusive.

Division 4:

Township 38 – In range 3 sections 13 to 36 inclusive. In range 2, sections 13 to 36 inclusive.
Township 39 – All range 2 within the R.M. of Aberdeen No. 373.

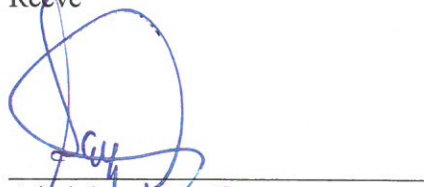
Division 5:

Township 39 – All of range 3 and range 4 lying within the boundaries of the R.M. of Aberdeen No. 373.
Township 40 – All of range 2 and range 3 lying within the boundaries of the R.M. of Aberdeen No. 373.
Township 41 – All of range 2 lying within the boundaries of the R.M. of Aberdeen No. 373.

2. The vote on the question shall be submitted to a vote on the 14th day of December, 2016 between the hours of 9:00 a.m. to 8:00 p.m.
3. The vote shall be held at the following polling places which will be at that the municipal office, 101 Industrial Drive in the Town of Aberdeen, the basement at the St. Paul's Bergheim Evangelical Lutheran Church located across the road from Mission Ridge I on Bergheim Road and Laniwei Hall which is located off of Fish Creek Road on the SW 1-41-02-W3rd.
4. The advance polls for the vote on the question shall be held on 3rd day of December, 2016 between the hours of 1:00 p.m. to 8:00 p.m.
5. The advance poll for the vote shall be held at the following polling places which will be the municipal office, 101 Industrial Drive in the Town of Aberdeen, the basement at the St. Paul's Bergheim Evangelical Lutheran Church located across the road from Mission Ridge I on Bergheim Road and Laniwei Hall which is located off of Fish Creek Road on the SW 1-41-02-W3rd.
6. The returning officer shall be present at the municipal office, 101 Industrial Drive in the Town of Aberdeen on the 9th day of December, 2016 between the hours of 9:00 a.m. and 4:30 p.m. to designate voters that represent supporters and opponents to attend at the polling place and at the final summing up of the votes pursuant to section 149 of *The Local Government Election Act, 2015*.
7. The returning officer shall on the 15th day of December, 2016 at 10:00 a.m. at the municipal office, 101 Industrial Drive in the Town of Aberdeen declare the results of the vote.




Reeve


Administrator